

TSXV: ABI

ABCOURT MINING INC

THE EMERGING

Junior gold producer



TABLE OF CONTENT

Page 1 – Introduction page

Page 2 – Table of contents page

Page 3 – Forward looking statement

Page 9 – Who we are page

Page 21 – What we do page

Page 29 – Our teams page

Page 41 – Client list page

Page 44 – Portfolio page

Page 52 – Financials highlights page

Page 66 – Infographic page

Page 87 – Maps page

FORWARD LOOKING STATEMENTS

Except for statements of historical facts, some statements contained in this PowerPoint presentation, constitute forward looking statements, including, without limitation, anticipated developments in the Company's operations in future periods and other events or conditions that may occur in the future. These statements are about the future and are inherently uncertain and actual achievements of the Company or other future events or conditions may differ materially from those reflected in the forward-looking statements due to a variety of risks, uncertainties and other factors. Management believes that the expectations reflected in those statements are reasonable but no assurance can be given that these expectations will prove to be correct. It is recommended not to place undue reliance on forward-looking statements as the plans, intentions or expectations upon which they are based might not occur.

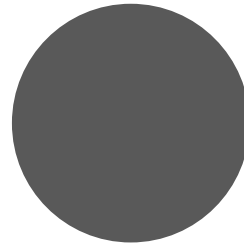
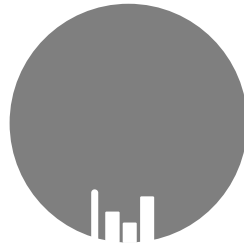
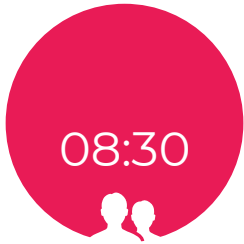
Abcourt Mines Inc,
an emerging junior
gold producer
with **2 gold mines**, 1 zinc
mine and several gold
and zinc projects



PRODUCTION TARGET

- At Elder : **15,000 to 18,000** ounces of gold/year
- At Sleeping Giant: **18,000 to 22,000** ounces of gold/year
- At Abcourt-Barvue: **0,8 M** oz of Ag and **19,000** tonnes of zinc/year

STRONG MANAGEMENT TEAM



Renaud Hinse, P

• P. Eng., Mining engineer *President and CEO* has been actively involved in operations throughout Canada for over 50 years, both with major and junior mining companies. Proven track record of cost efficient mining management.

**Claude Ferland
Charles Bélanger, P. Eng., M.B.A.,**

Claude Ferland, P. Eng. With more than 20 years of experience in Canada.

Charles Bélanger, P. Eng., M.B.A., has more than 30 years of mining experience in Canada.

**Roger Jolicoeur (RWJ
Consultants Miniers)**

Roger Jolicoeur (RWJ Consultants Miniers), Mill operator and construction specialist with extended worldwide experience.

**Christine
Lefebvre**

Christine Lefebvre, LLB, CPA, CA, chief accountant with several years of experience.

Directors

Renaud Hinse, mining engineer, CEO
François Mestrallet, business man
Normand Hinse, B. adm., business man
Jean-Guy Courtois, retired business man
Nicole Veilleux, CPA, CA, accountant
Daniel Adam, maîtrise et doctoraten géologie de l'Université de Lorraine en France.



Renaud Hinse, P

“Lorem ipsum dolor sit amet, consectetur adipiscing elit. Morbi eros quam, elementum non suscipit eu, sagittis at leo. Mauris at posuere justo, in lacinia diam. Vestibulum gravida lorem id diam sollicitudin dictum.

Morbi efficitur pulvinar ante ut mattis. “

KEY EVENTS IN FISCAL

JUNE 30, 2018 PERIOD

- Revision of Elder resources in 43-101 reports by Jean-Pierre Bérubé;
- Elder production of 113,398 tonnes with 15,380 ounces of gold recovered;
- Improvement in health and safety record;
- 7/7 working schedule started at Elder in December 2017;
- Calculation of 43-101 resources at Sleeping Giant mine;
- Good operating performance of the mill with 97% recovery of gold for Elder;
- Treatment of custom ore started in September 2018;
- Lab used to assay samples from outside clients;
- \$4.0 M increase in assets from \$37.5 M to 41.5 M while liabilities increased by \$1.9 M only;
- Cash and receivables increased by \$0.9 M;
- Gross operating profit increased from \$728,624 to \$3,548,784;
- Revision of Elder and Sleeping Giant closure plans;
- Revision of Elder C.A. to comply with new by-laws;
- Substantial increase in the price of zinc and update of 2007 feasibility study currently being done.



- **Gross operating profit increased from**

- **\$728,624**

Business analytics
revenue increased

\$3,548,784

\$4.0 M increase in assets from \$37.5 M to 41.5 M while liabilities increased by \$1.9 M only

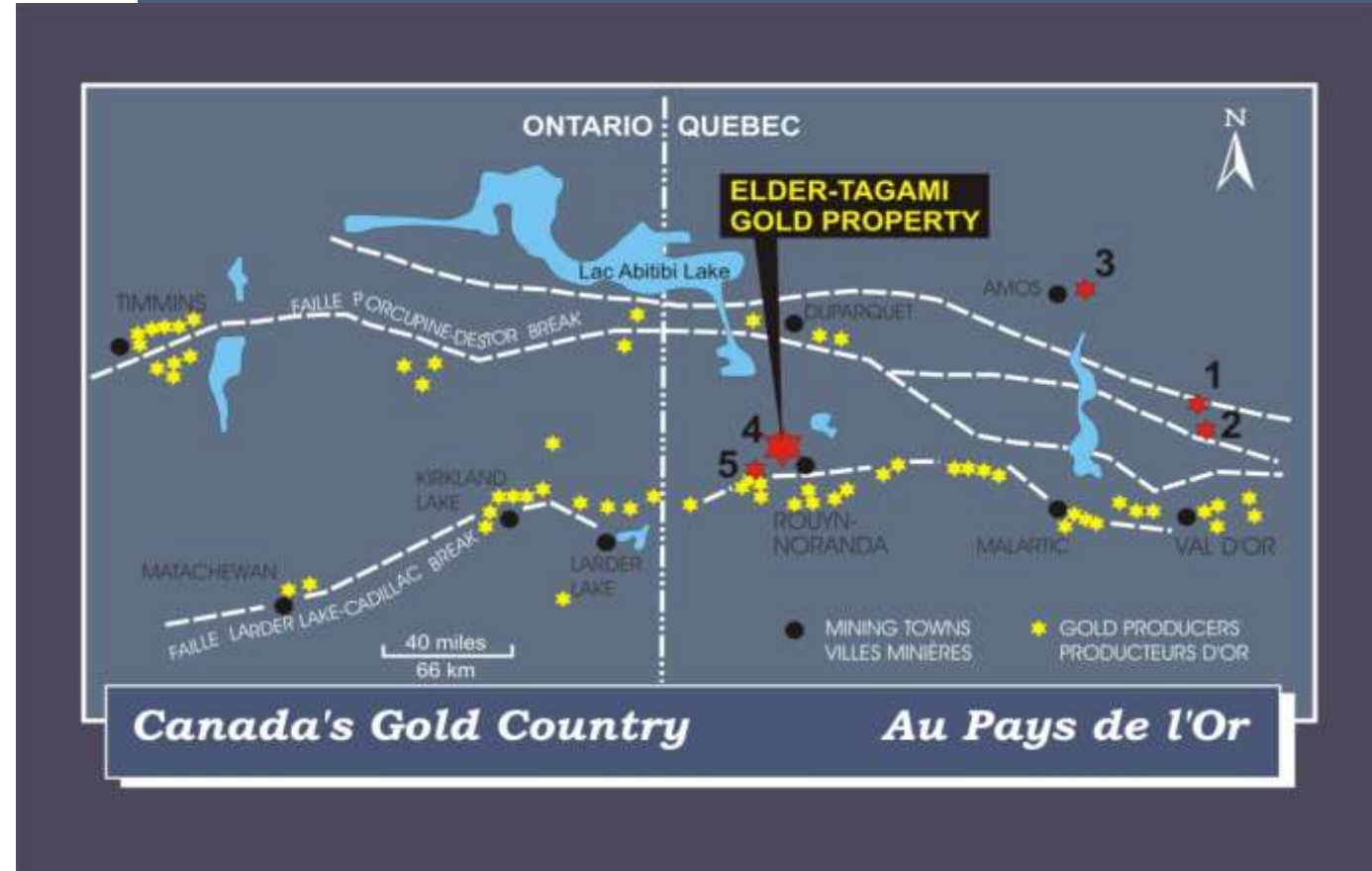
PEUT ETRE AJOUTER DES INFOS RECENTES ?

ABCOURT'S PROPERTIES

(ROUYN-NORANDA / VAL-D'OR AREA)

TSXV: ABI / Pink Sheets: ABMBF

- 1- Abcourt-Barvue
- 2- Vendome
- 3- Jonpol
- 4- Elder-Tagami
- 5- Aldermac



ABCOURT'S PROPERTIES

(AMOS – MATAGAMI AREA)

TSXV: ABI / Pink Sheets: ABMBF

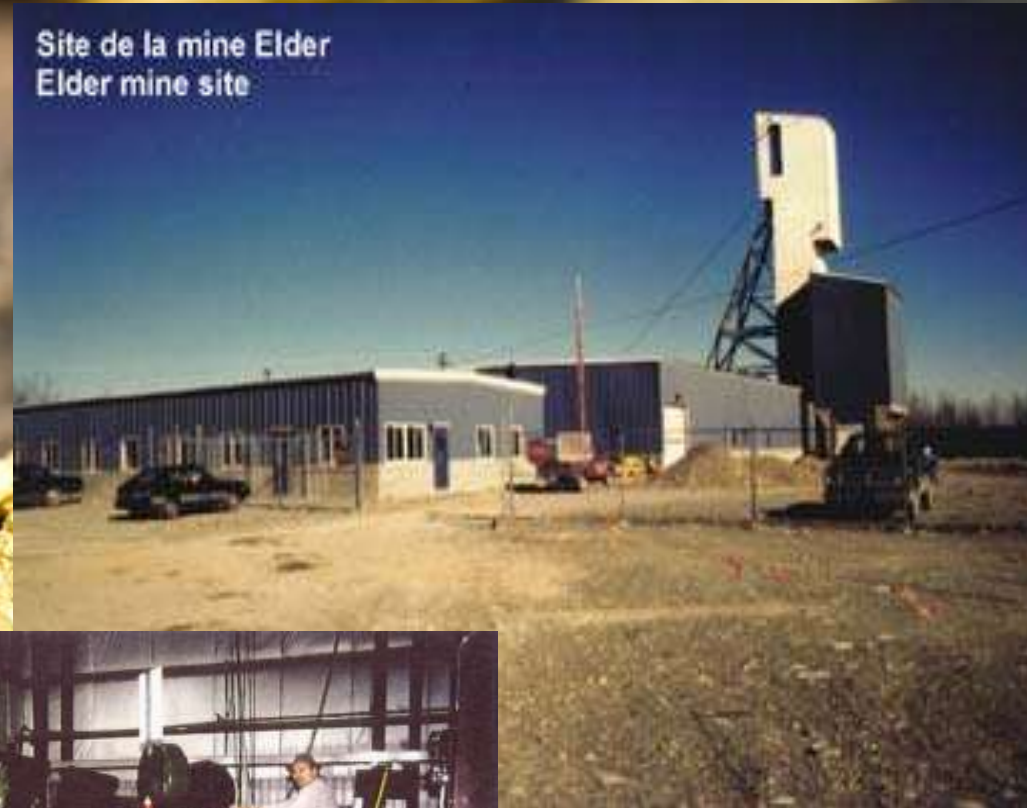
- 6- Vezza (claims)
- 7- Géant Dormant mine
- 8- Discovery - Flordin



The mine is equipped with functional buildings and all of the surface and underground equipment with a 2,600-ft shaft (793 m) and 16 levels.

102 employees
(December 2018)

THE ELDER — GOLD MINE



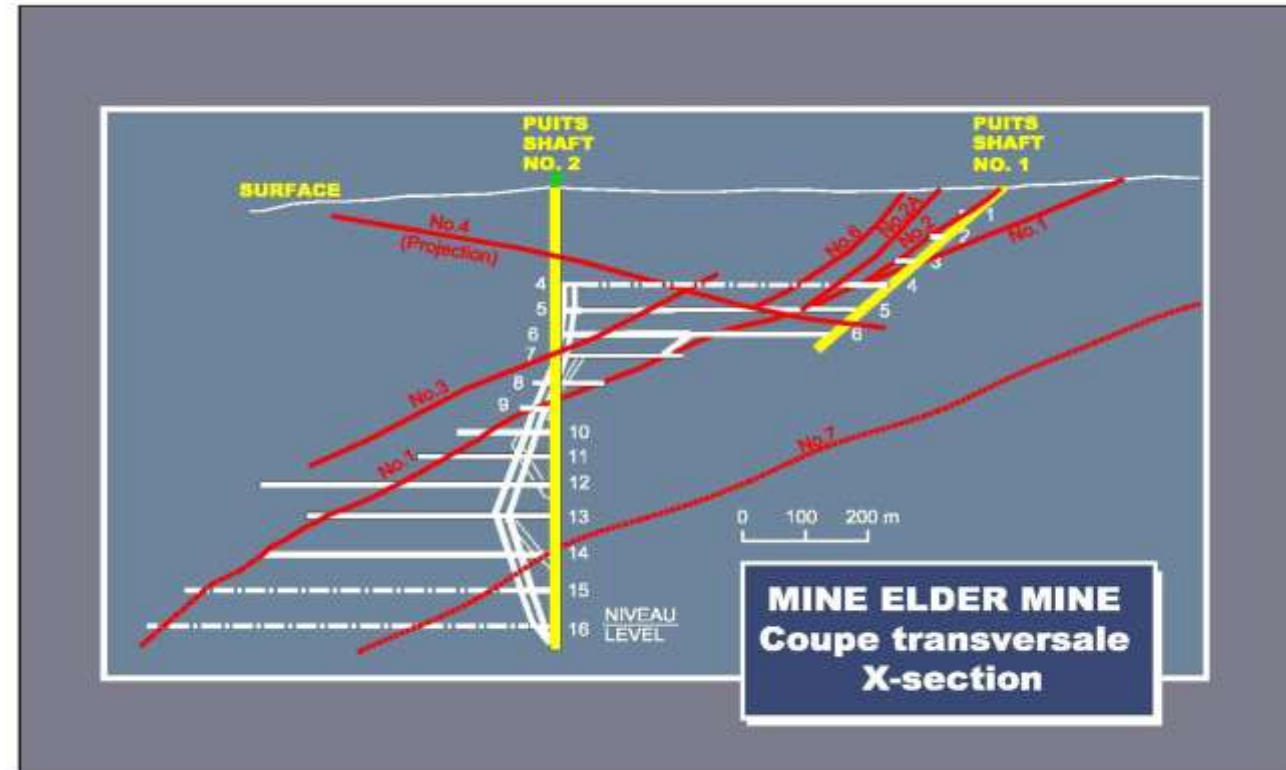
Site de la mine Elder
Elder mine site



In 2017/18 most ore was sourced from levels 5 and 6, east and west.

The deposit is open at depth.

An underground mine development program is being implemented to open up new stoping areas on levels 3 and 4.



2018

ELDER MINE and TAGAMI RESOURCES

13



✓ 43-101 Measured and Indicated Resources

3.45 g/t Au cut off grade

✓ 638,083 tonnes @ 6.38 g/t Au
43-101 Inferred Resources

130,974 ounces

✓ 43-101 Inferred Resources
3.8 g/t Au cut off grade

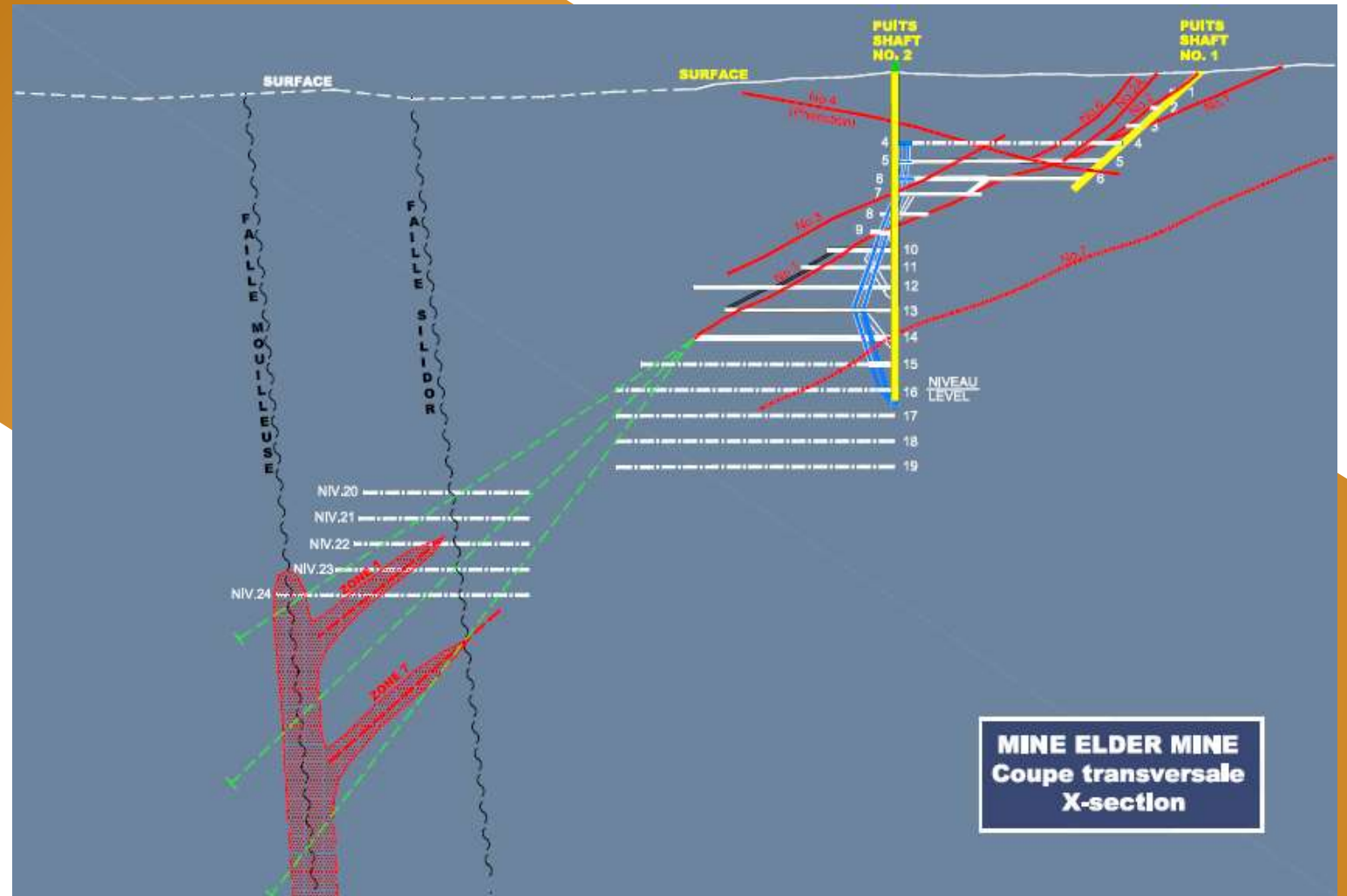
547,746 tonnes @ 5.93 g/t Au

104,400 ounces



Exploration

Cibles en profondeur



Summary of Fiscal 2015, 2016, 2017 and 2018

	Fiscal 2015	Fiscal 2016	Fiscal 2017	Fiscal 2018
Gold mineralization extracted	66,572 tonnes	7,868 tonnes	97,451 tonnes	114,475 tonnes
Gold mineralization treated at mill	64,289 tonnes	106,970 tonnes	98,153 tonnes	113,398 tonnes
Gold recovered	9,161 ounces	15,712 ounces	13,405 ounces	15,380 ounces
Silver recovered	2,367 ounces	2,248 ounces (est)	2,498 ounces	n/d
Proceeds from sales of gold and silver	13,485,248 \$CA	23,980,361 \$CA	22,251,953 \$CA	26,044,120 \$CA

✓ 3451.29 USD

NEW FACT ?

✓ 1549.46

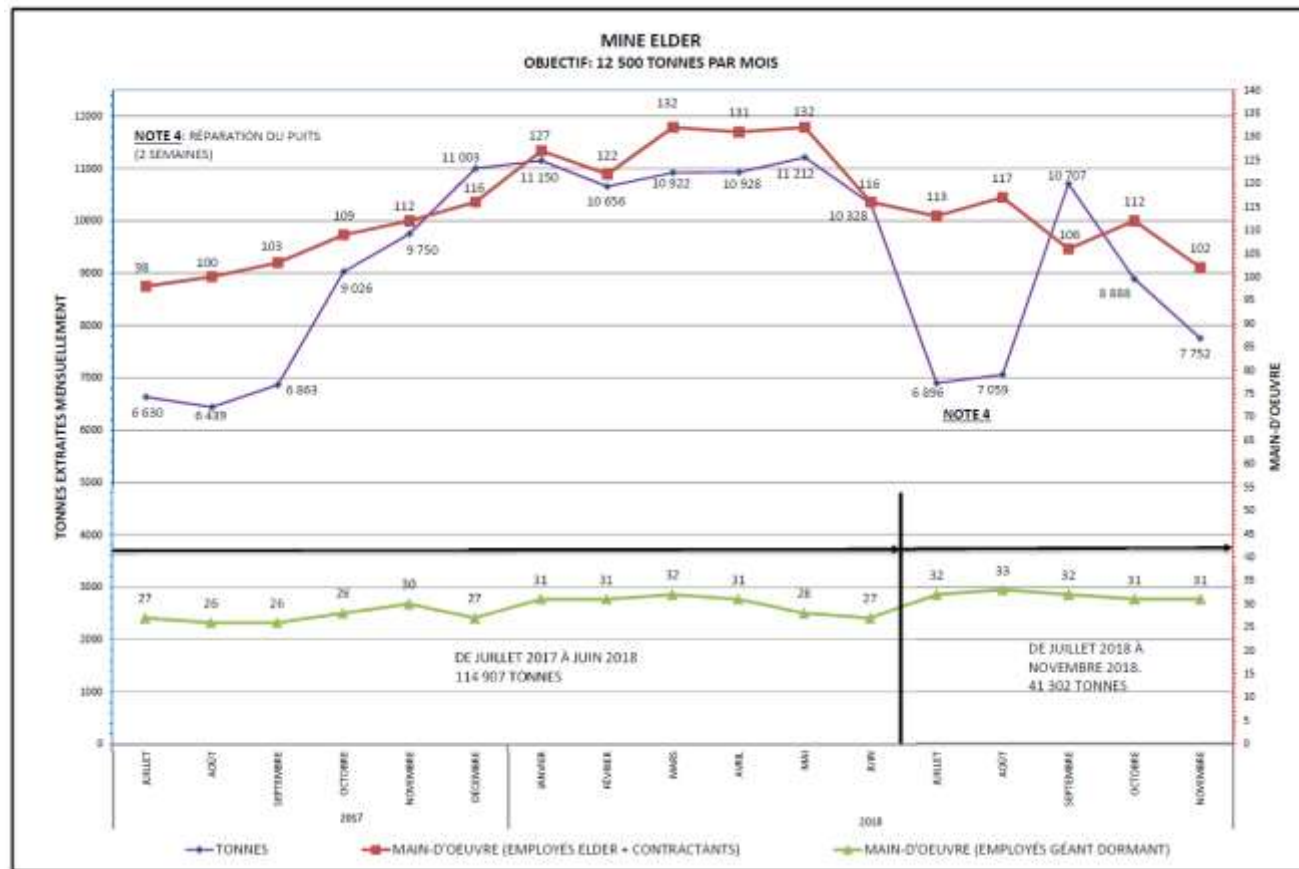
TITLE TEXT HERE PLEASE
USD

✓ 6471.21 USD

TITLE TEXT HERE PLEASE

TO GET INCOME

Lorem ipsum dolor sit amet, consectetur adipiscing elit. Morbi eros quam, elementum non suscipit eu, sagittis at leo. Mauris at posuere justo, in lacinia diam. Vestibulum gravida lorem id diam sollicitudin dictum. Morbi efficitur pulvinar ante ut mattis. Mauris id orci ut nulla bibendum posuere quis quis lacus. diam sollicitudin dictum.

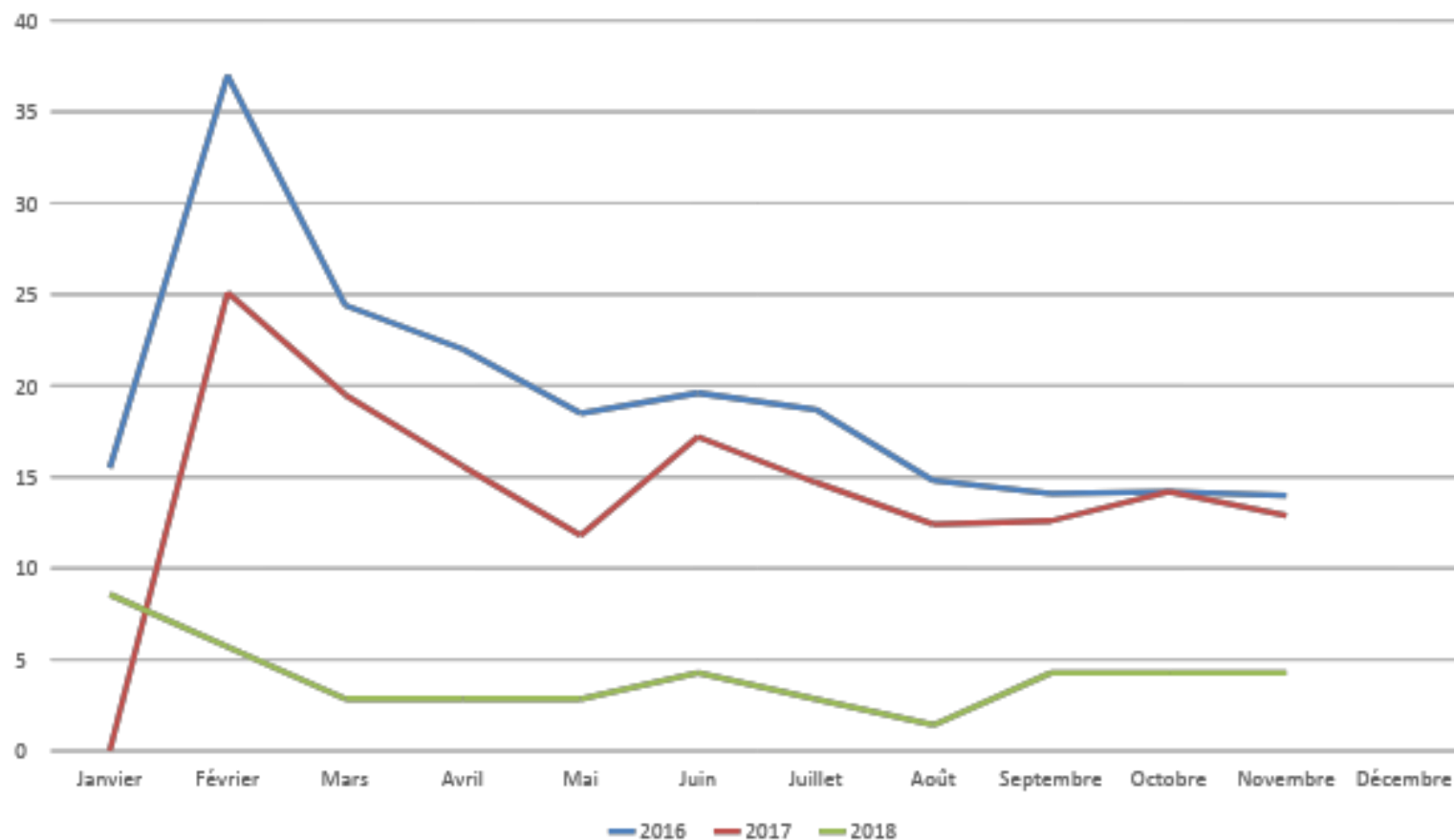


FRÉQUENCE

ANNUELLES

Lorem ipsum dolor sit amet, consectetur adipiscing elit. Morbi eros quam, elementum non suscipit eu, sagittis at leo. Mauris at posuere justo, in lacinia diam. Vestibulum gravida lorem id diam sollicitudin dictum. Morbi efficitur pulvinar ante ut mattis. Mauris id orci ut nulla bibendum posuere quis quis lacus. diam sollicitudin dictum.

Fréquences annuelles

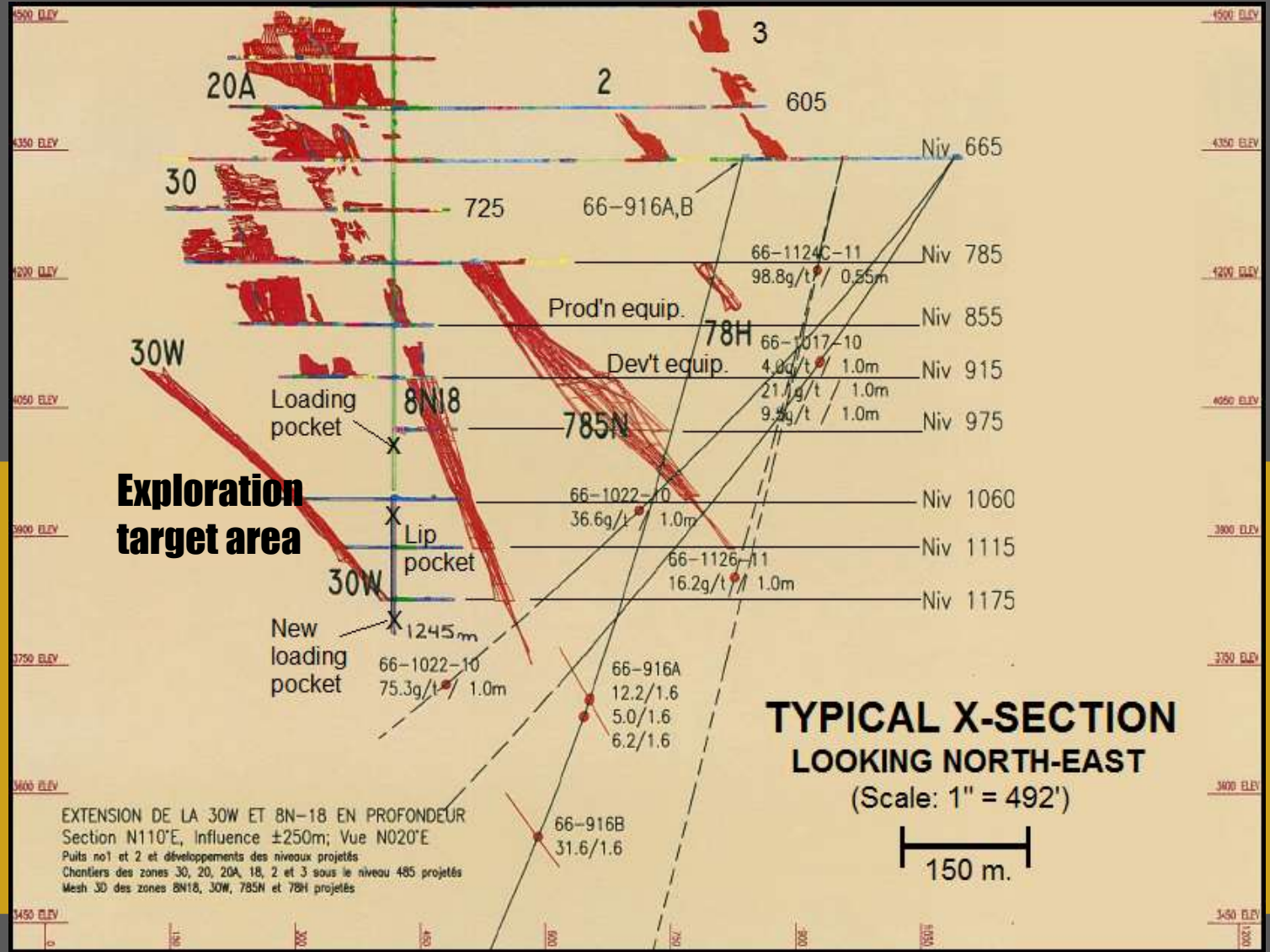


Sleeping Giant mine might be re-started in mid-2019

La mine Géant Dormant pourrait être relancée dès la mi-2019

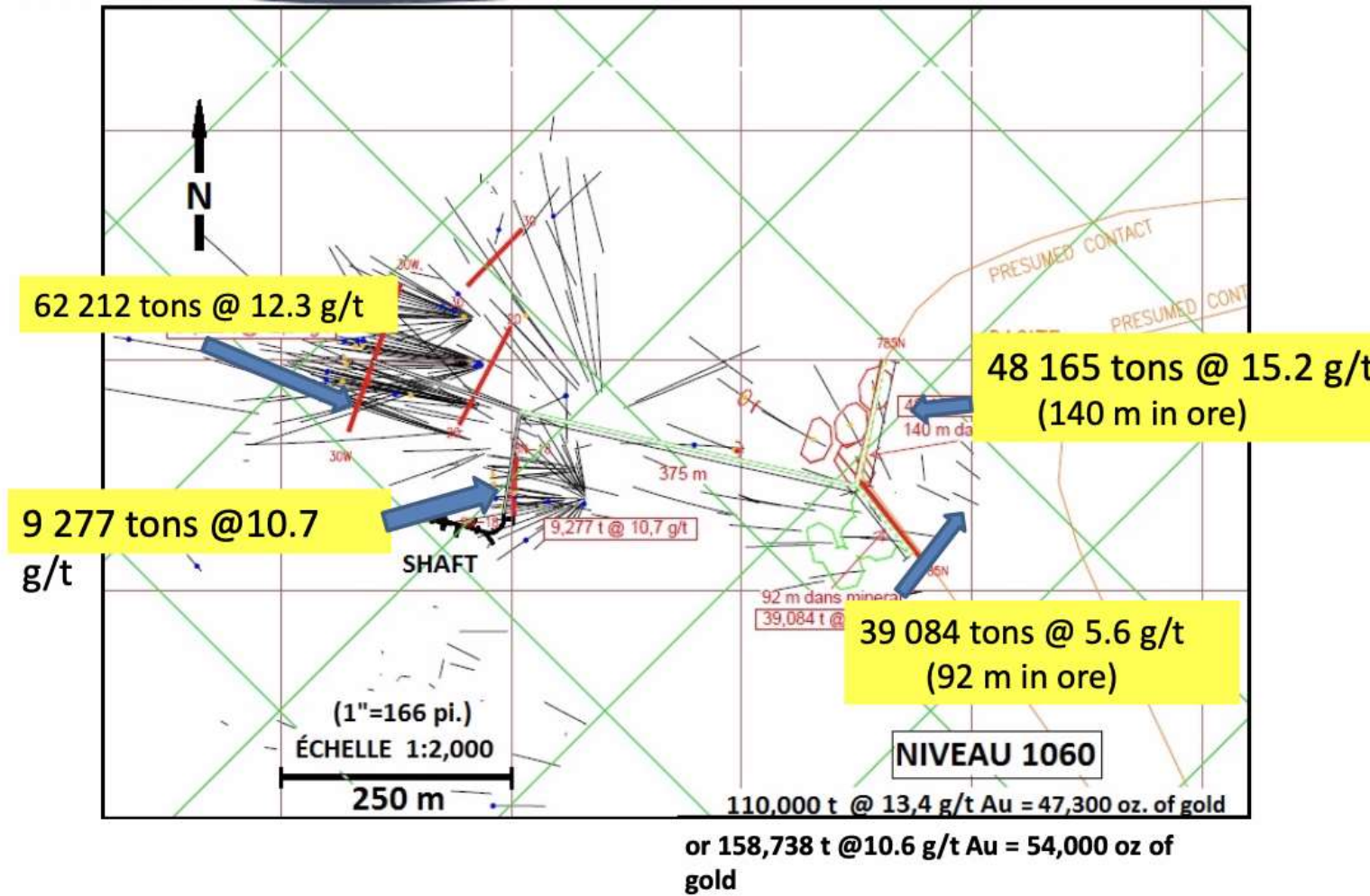


WE GIVE THE BEST EXPLORATION AREA



TSXv: ABI

EXPLORATION AREA



SLEEPING GIANT RESOURCES

September 2018, Mr. Jean-Pierre Bérubé, consultant engineer in geology, prepared a 43-101 resources calculations report for the Sleeping Giant mine.

Here is a summary of measured and indicated resources:

Category	Tonnes	Grade g/t Au
Measured	10,900	12.20
Indicated	475,633	11.17
Total	486,500	11.20

Category	Tonnes	Grade g/t Au
Inferred	93,100	11.85



HIGHLIGHTS SLEEPING GIANT

- **New automat installed in mill;**
- **Good gold recovery (97%) for Elder ore;**
- **Custom milling started in September 2018;**
- **Internal economic analysis being prepared;**
- **Mine laboratory used for outside clients.**

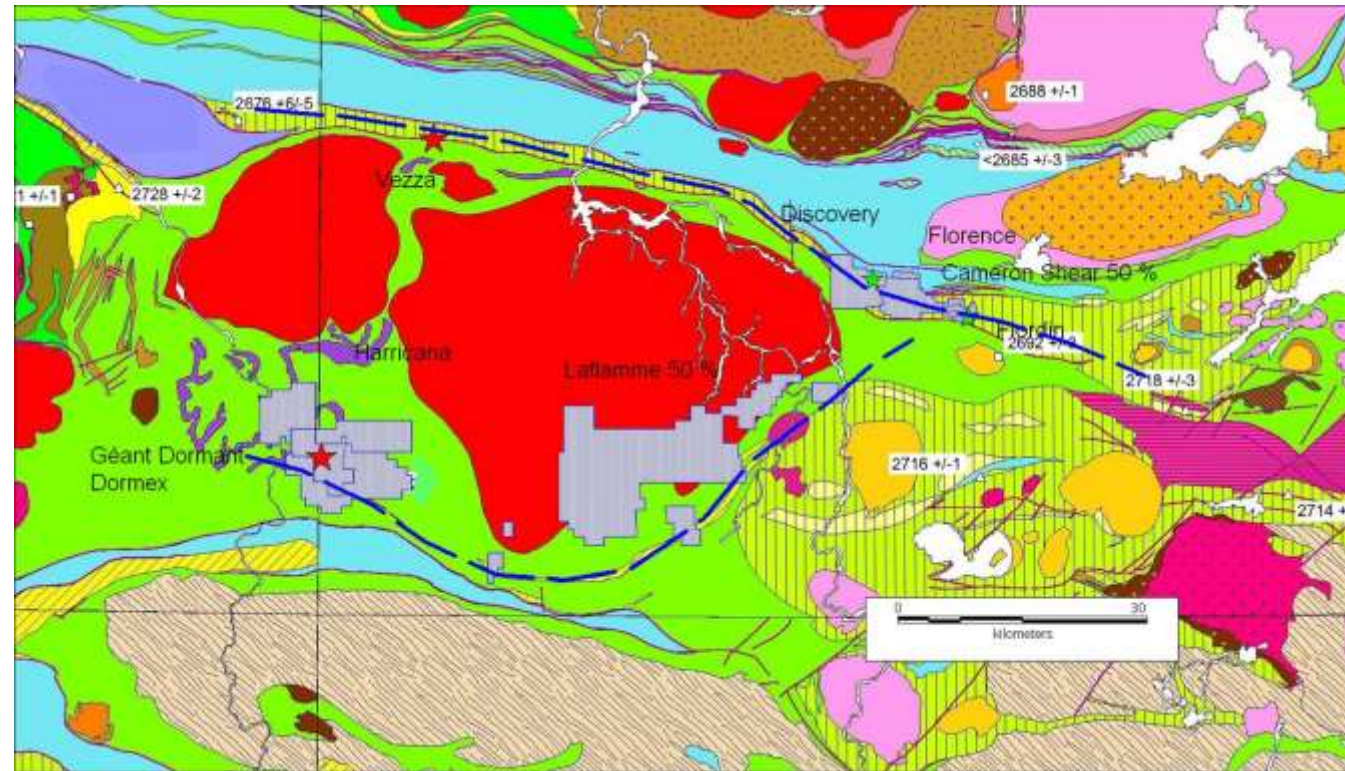


OTHER GOLD PROJECTS AND PROPERTIES

- **Discovery** property with substantial gold mineralization. Thirteen holes drilled recently. Assays pending. Resources calculations to be updated;
- **Flordin** property with significant gold mineralization. Recent drilling done. Assays pending.
- **Jonpol** property with historical resources of Ag, Au, Cu, Zn;
- **Veza, Dormex, Cameron Shear, Laflamme** properties with favourable geology for gold.

Location of the Sleeping Giant mine

and other Gold Properties with the
Regional Geology



BARVUE MINE SILVER-ZINC PROJECT

25



ABCOURT-BARVUE RESERVES AND RESOURCES

Past producer 1952-1957: 8.87 M oz Ag and 198,850 st Zn in concentrate from Barvue open pit mine

1985-1990: 2.67 M oz Ag and 34,850 st Zn in concentrate from Barvue U/G mine

According to 2014, 43-101 Mineral resources report by consultant J.P. Bérubé:

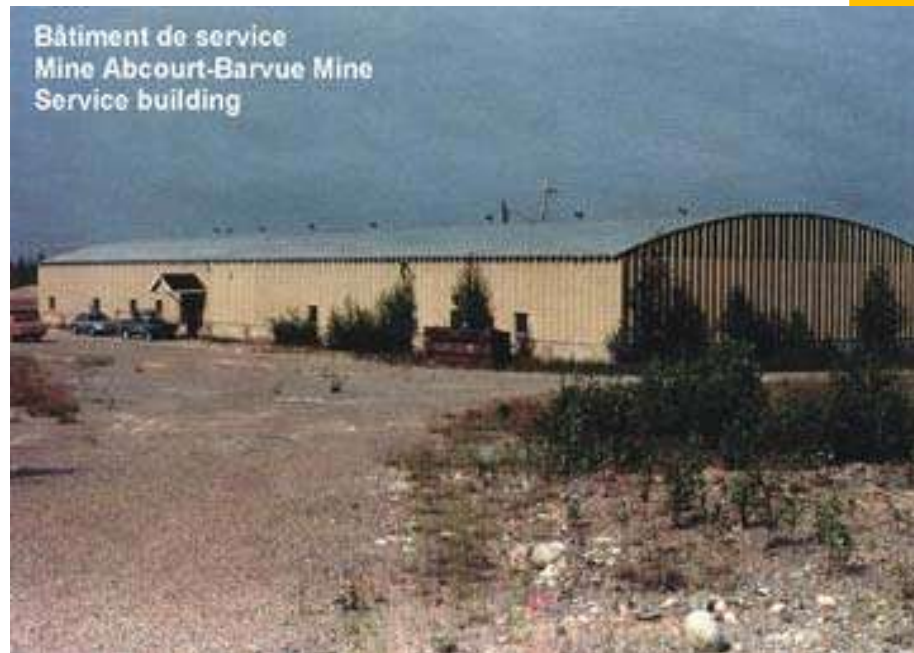
Measured & Indicated resources: 8,086,000 t @ 55.38 g/t Ag & 3.06%/t Zn
(14,400,000 ounces of silver & 545,000,000 pounds of zinc)

Inferred resources: 2,041,150 t @ 114.32 g/t Ag & 2.89%/t Zn
(7,500,000 ounces of silver & 130,000,000 pounds of zinc)

Meet our leader

EMERGING SILVER-ZINC PRODUCER

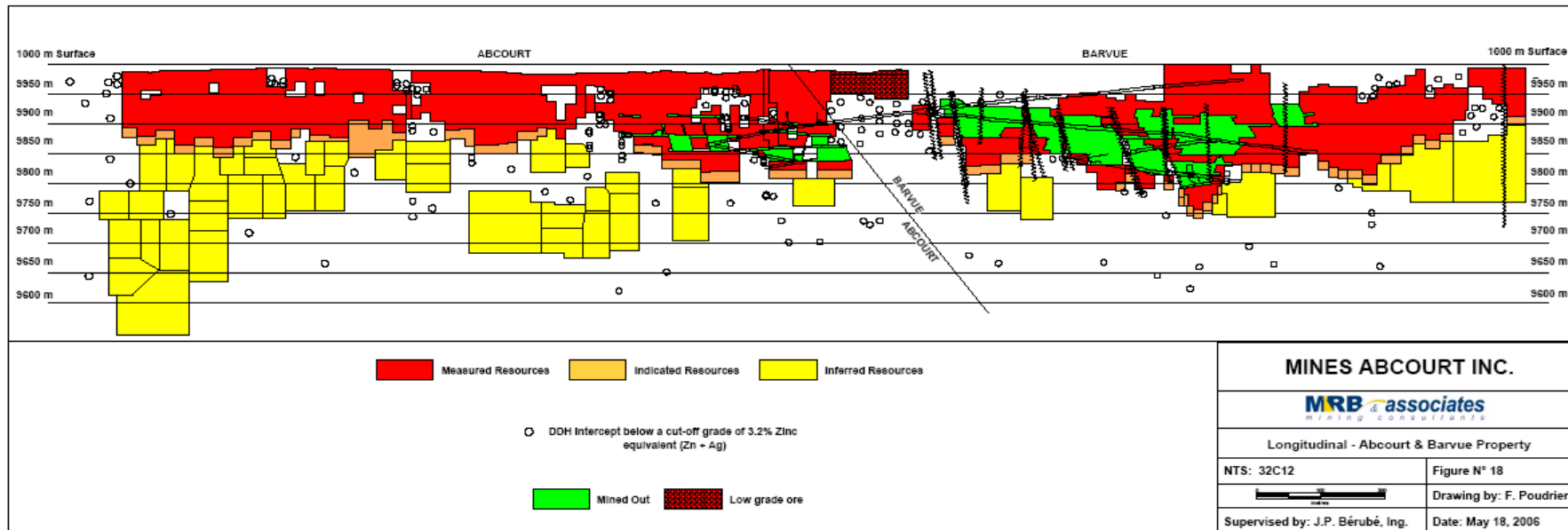
- Existing infrastructures are evaluated at **7 M \$CA** (buildings an equipment)



- **Two-kilometer long mineralized zone in major structure**
- **Explored at depth to only about 200 m**

2014 measured and indicated resources: 8,086,000 tonnes @ 55.58 g/t Ag, 3.06% Zn

2014 inferred resources: 2,041,150 tonnes @ 114.32 g/t Ag, 2.89% Zn





Our professional teams





Lorem ipsum dolor sit amet,
consectetur adipiscing elit. Morbi
eros quam, elementum



Lorem ipsum dolor sit amet,
consectetur adipiscing elit. Morbi
eros quam, elementum



Lorem ipsum dolor sit amet,
consectetur adipiscing elit. Morbi
eros quam, elementum

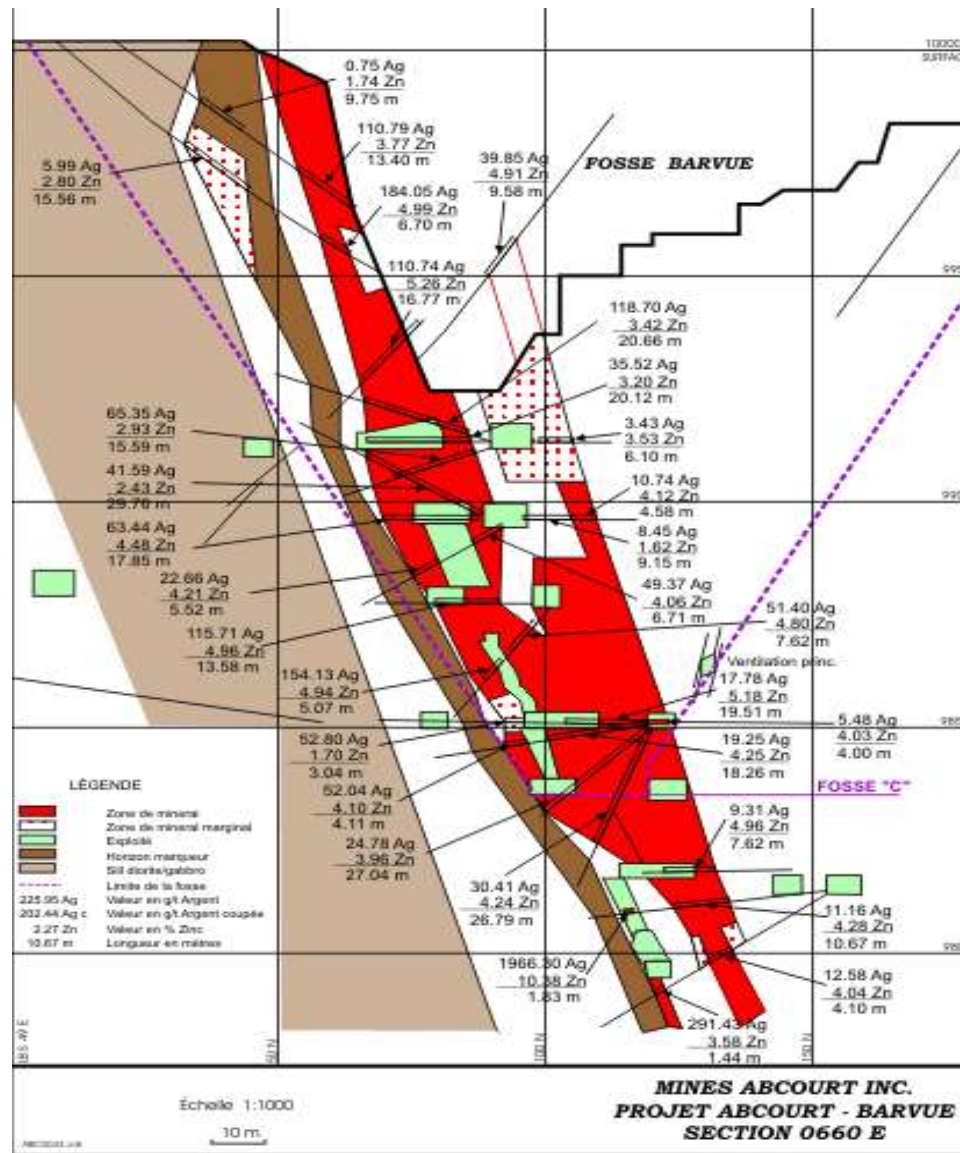


Lorem ipsum dolor sit amet,
consectetur adipiscing elit. Morbi
eros quam, elementum

TYPICAL SECTION

Barvue Deposit Showing :

- ore zone
- marginal ore
- mined out areas
- existing open pit
- proposed open pit





ABCOURT-BARVUE ESTIMATED OPERATIONAL HIGHLIGHTS

HIGHLIGHT
S

- Property easily accessible; some buildings available on property
- Project consists of 80% open pit & 20% underground mining at a rate of 615,000 t/yr
- Processing consists of producing a silver-zinc concentrate to recover up to 77% of the silver and producing a 56-57% Zn concentrate for sale

**ABCOURT-BARVUE
ESTIMATED
OPERATIONAL
HIGHLIGHTS**

HIGHLIGHT

S

- The mine and mill will be in production in about 24 months after adequate financing
- Close to 80% of milling and underground mining equipment is on the property
- Qualified manpower and mining services are readily available in the area
- Tailing disposal area already approved and certificate of authorisation has been issued for water treatment facilities and the dewatering of the the mine

Summary of project CAPEX and OPEX 2008 estimate

- An update of the 2007 feasibility study is being prepared now;
- Pre-production project cost is in the order of \$40 M;
- Operating costs are in the \$40 / tonne range;
- Value of mineralization is about \$67.86 / tonne;
- Average annual cash flow \$20 M.

INC

**Satellite Properties
(for additional mill feed)**



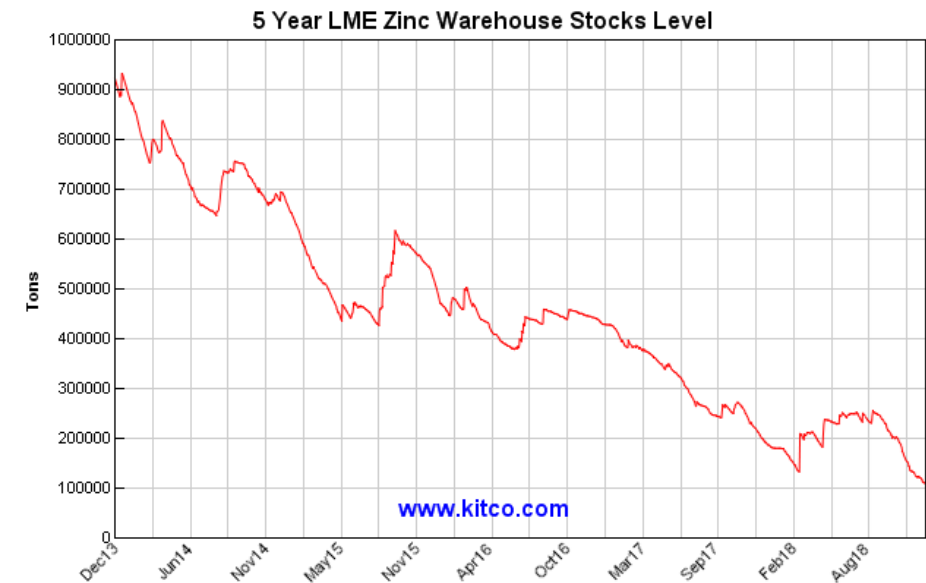
Zn – Ag – Au – Cu Properties

**(with distance to Barvue'
s future mill site)**

Vendôme (15 km S of mine site)

**Jonpol-Paramount (35 km NW of
mine site)**

**Aldermac (150 km SW of mine
site)**



INC

**Satellite Properties
(for additional mill feed)**



Zn – Ag – Au – Cu

Properties

**(with distance to Barvue'
s future mill site)**

**Vendôme (15 km S of
mine site)**

**Jonpol-Paramount (35 km
NW of mine site)**

**Aldermac (150 km SW of
mine site)**





Thank you

Renaud Hinse
President, Director and CEO

Abcourt Mines Inc.
175 Avenue de l'Église
Rouyn-Noranda, Québec
J0Z 1Y1

Tel.: 1-819-768-2857
rhinse@abcourt.com

Site de la mine Elder
Elder mine site

